



Brasstown, North Carolina

www.brasstownwoodturners.org

Tony R. Bradley
BWG News Editor
tbradley@cwmatthews.com
678.471.3042

NEXT MEETING

October 10, 2015 – Hayesville High School **9:30 AM** to 1:00 PM.

Jack Morse will be our program presenter. He will be demonstrating sanding and finishing along with something turned.

There will be a \$10.00 fee payable at the door.

PRESIDENT'S CORNER

Greetings from NE Georgia. Summer is about over and fall is just around the corner. Jack Morse is our featured demonstrator for the October meeting and he will present a demonstration on urns. This will be a very informative meeting and the cost at the door will be \$10 to defray his costs of travel.

We still need some extra volunteers to help with the Hayesville HS turning endeavors. Our schedule for September is the 14th, 21st, 22nd, 23rd, and 28th and 29th starting at 8:00am with the final block at 1:30 to 3:00pm.

Meeting

The meeting opened with 23 members and 4 guests in attendance.

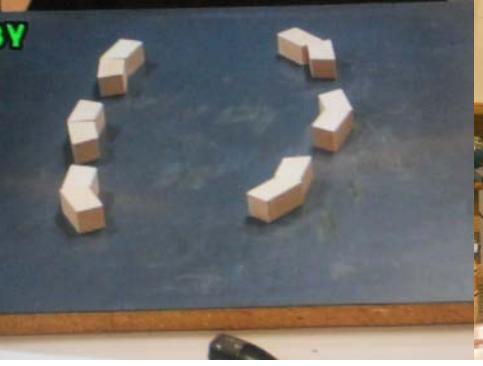
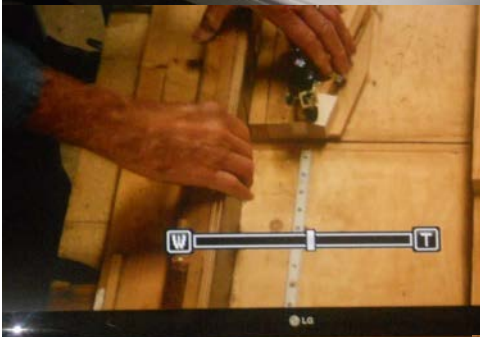
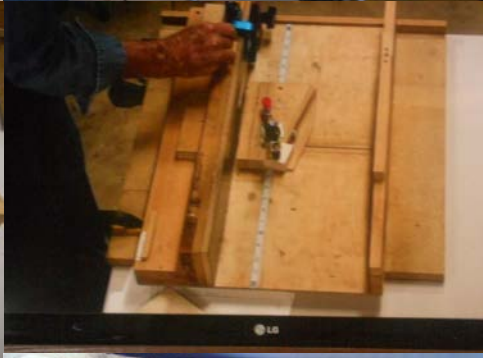
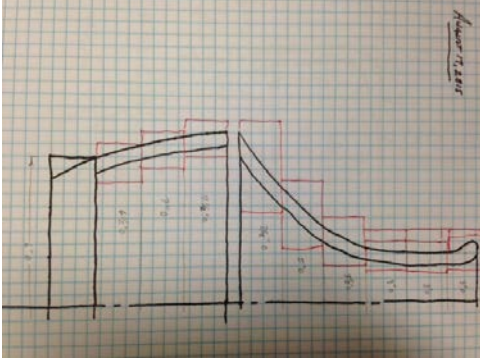
J.C. welcomed everyone to the meeting and asked any guests to stand and introduce themselves. Don Marks, JC and George Dinsmore discussed the need for additional volunteers need to help mentor the woodturning class at the High School. It was noted that

woodturning would not be available to the students if the volunteers were not present. Don will provide a class schedule so members can plan to volunteer. Marsha discussed that once the grant application requirements are available, she would apply for the \$1200 grant to buy tools for the class. Election of the 2016 officers will be discussed at the next meeting in October. Mike Regner will not be able to attend the February and March 2016 meetings and needs someone to handle the raffle. No one volunteered at this time. The October meeting will be held the second Saturday, Oct 10th. The November meeting will also be moved to the second Saturday, Nov. 14th. J.C. then introduced our featured demonstrator.

~~~~~

### **Walter Berg – Segmented Turning**

Walter began his presentation by discussing the required number of segments required to form a ring. A 12 piece segment requires the pieces to be cut on 15° angle to create the circle. He uses several species of wood to create contrast and variety. Because dissimilar types of wood shrink at different rates, it is important the pieces of wood maintain 2% moisture content. Walter uses a moisture meter to check the actual moisture content. It takes approximately 1 year to dry 1" of wood. Walter stores the wood that he uses up in the attic. Before starting a segmented project, layout the desired shape on grid paper. Once you are happy with the outline, draw squares along the finished shape using the lines on the grid paper. This will help you determine the width required for each piece. To determine the length, Walter passed out a chart that has the diameters and number of segments based on 6, 12 and 24 piece rings. (copy attached). Walter uses a carbide tip table saw blade manufactured by Forrest. This blade was recommended by a master cabinet maker and stays sharp longer than the bargain brand. Walter has developed a homemade jig that has pieces on the bottom that follows the miter table slots. He also, constructed a jig to fit on the table that holds the small segment pieces at the correct 15°. The fence is adjustable the pieces are all the same length to create the desired ring. Once all the pieces are cut, he begins assembly by gluing two sections together, firmly pressing together using Titebond II wood glue. He then glues the double pieces together creating half of the ring. He then places the half ring on the table saw jig lining the outer tips to the saw cut. The cuts both half rings to insure a tight fit for the final assemble. Walter uses a solid piece for the bottom. He cuts round to fit the first ring, and then bores a 2" hole/recess to mount the chuck. The chuck remains attached throughout the complete process of adding and turning the vessel. Before gluing the first ring to the solid base, he sands one side of the ring to insure a tight fit. He then places the assembly in a homemade press for final drying. The glue dries quickly and is ready to turn in a couple of hours. Once the piece is dry, the mounts on the lathe and turns the base and first ring to the desired shape. He also true's up the ring to receive the next section. This process is repeated with various diameter rings to form the final shape of the vessel. To avoid glue creep, he set the finished piece on a shelf for 2-3 weeks to allow the wood to expand/contract due to the added moisture from the gluing process. To finish the pieces Walter applies Hutt Wax used by pen turner with a towel at high speed. To give it that final shine and finish he uses Renaissance Wax that is highly resistant to moisture, fingerprints, and heat. To create the rings using various pieces, the angle will need to be adjusted accordingly. For 6 pieces, use 30°, 24 pieces, use 7 1/2° and 12 pieces, use 15°. Walter then closed out his presentation by showing the group different pieces. One that was stair stepped used 12 different varieties of wood. Another had a brick pattern using veneer between the segments.





---

## Show and Tell

A several pieces were shared with the group:



---

## Bring Back

The "bring back" was a potpourri bowl by George Dinsmore

Winner: Chuck Honaker



---

## **BWG News**

**BWG BADGES** -- Badges have been printed, and are now encased in a 'clip badge', rather than a pin-on. Please remove, and return to box after each meeting. The badges are stored in alphabetical order. If 'lost' there will be a \$2 service charge for a replacement badge. Any new members will receive badge at the next meeting. Please let me know if there are any changes or corrections are needed

**Folk School** -- Woodturning course (and others) are available to people in the surrounding Counties (see below) at a discounted rate of 'half'. This is for the course only- does not include room/meals. If you are enrolled as a local resident, you will be bumped by paying, scholarship, etc. students. Participating Counties are; Cherokee, Clay, Graham, Macon, and Swain Counties, NC and Fannin, Towns, and Union Counties in GA.

**Folk School Local Scholarships Available** -- Some great local scholarships are available to full-time, local residents. [www.folkschool.org](http://www.folkschool.org) -- check under "For Locals" Tuition is FREE - but each student will be required to pay a \$25 registration fee and any additional materials costs. If there is space available and you choose to stay on campus, regular housing and meals rates apply. "Local" is a **full-time, permanent resident** of the following counties:  
NC: Cherokee, Clay, Macon, Swain, Graham; GA: Union, towns, Fannin; TN: Polk

---

### **Items for Sale**

None at this time

---

### **Up-coming Events**

**Turning Southern Style XXI Symposium** September 18-20, 2015. Northwest Georgia Trade and Convention Center, Dalton, GA. Featured demonstrators: Nick Agar, Benoit Averly, Jimmy Clewes, Nick Cook, John Lucas and Harvey Meyer. Vendors, instant Gallery. Information and registration at [www.gawoodturner.org/](http://www.gawoodturner.org/)

**North Carolina Woodturning Symposium** November 6-8, 2015. Greensboro Coliseum Special Events Center, Greensboro, NC. Featured demonstrators: Nick Agar, Don Derry, Jimmy Clewes, Ashley Harwood, Mike Jackofsky, Al Stirt and many more. Vendors, instant Gallery. Information and registration at [www.northcarolinawoodturning.com](http://www.northcarolinawoodturning.com)

**Florida Woodturning Symposium** February 5-7, 2016. Lake Yale Baptist Conference Center, Leesburg, FL. Featured demonstrators: John Beaver, Jimmy Clewes, Ashley Harwood, Joe Ruminiski, Andy Cole, Al Hockenbery, Rudy Lopez and Walt Wager. Vendors, door prizes, workshops, instant Gallery. Information and registration at [www.floridaturningsymposium.com](http://www.floridaturningsymposium.com)

---

## 2015 Scheduled Meetings

| Date     | Demonstrator     | Subject                                    |
|----------|------------------|--------------------------------------------|
| 10-Jan   | Don Marks        | Small Lamp                                 |
| 07-Feb   | Jack Mincey      | Ornament with a sea urchin (\$5.00)        |
| 07-Mar   | Alex Bolden      | Salt Shaker                                |
| 04-April | Talmadge Murphey | To be determined                           |
| 02-May   | Gene Gross       | Three part candle from a single source     |
| 06-June  | Chuck Waldroup   | Mini cowboy hat (\$10.00)                  |
| 27-June  | Joe Waldroup     | Winged Bowl                                |
| 01-Aug   | Dean Hutchins    | Surface Enhancements & Piercing (\$10.00)  |
| 05-Sep   | Walter Berg      | Segmented Turning Techniques               |
| 10-Oct   | Jack Morse       | Sanding and finishing and something turned |
| 14-Nov   | Terrence Powell  | To be determined                           |
| 05-Dec   | Christmas Party  |                                            |

---

## BWG 2015 OFFICERS

|                |                  |              |                                                                          |
|----------------|------------------|--------------|--------------------------------------------------------------------------|
| President      | J C Berrong      | 706-896-5711 | <a href="mailto:xjcberrong@windstream.net">xjcberrong@windstream.net</a> |
| Vice President | Don Marks        | 828-524-6282 | <a href="mailto:donemarks@dnet.net">donemarks@dnet.net</a>               |
| News Editor    | Tony R. Bradley  | 678-477-3042 | <a href="mailto:tbradley@cwmatthews.com">tbradley@cwmatthews.com</a>     |
| Treasurer      | Marsha Barnes    | 828-837-6532 | <a href="mailto:ml.barnes@brmemc.net">ml.barnes@brmemc.net</a>           |
| BWG Advisors   | Talmadge Murphey | 828-369-7457 | <a href="mailto:tgmurphey@frontier.com">tgmurphey@frontier.com</a>       |
|                | Glen Love        | 828-389-6088 | <a href="mailto:glenplove@frontier.com">glenplove@frontier.com</a>       |

| Diameter | 6 Segments | 12 Segments | 24 Segments |
|----------|------------|-------------|-------------|
| 3"       | 1 3/4"     | 3/4"        |             |
| 3 1/2"   | 2 1/16"    | 7/8"        |             |
| 4"       | 2 3/8"     | 1"          |             |
| 4 1/4"   | 2 1/2"     | 1 1/8"      |             |
| 4 1/2"   | 2 5/8"     | 1 1/4"      |             |
| 5"       | 2 11/16"   | 1 3/8"      |             |
| 5 1/4"   | 2 3/4"     | 1 7/16"     |             |
| 5 1/2"   | 2 7/8"     | 1 1/2"      |             |
| 5 3/4"   | 3"         | 1 17/32"    | 3/4"        |
| 6"       | 3 1/8"     | 1 9/16"     |             |
| 6 1/4"   | 3 1/4"     | 1 5/8"      | 13/16"      |
| 6 1/2"   | 3 5/16"    | 1 3/4"      |             |
| 6 3/4"   | 3 1/2"     | 1 13/16"    | 7/8"        |
| 7"       | 3 5/8"     | 1 7/8"      |             |
| 7 1/4"   | 3 3/4"     | 1 31/32"    |             |
| 7 1/2"   | 3 7/8"     | 2"          | 1"          |
| 7 3/4"   | 4 1/16"    | 2 1/8"      |             |
| 8"       | 4 3/16"    | 2 1/4"      | 1 1/16"     |
| 8 1/2"   | 4 7/16"    | 2 3/8"      |             |
| 9"       | 4 3/4"     | 2 1/2"      | 1 3/16"     |
| 9 1/2"   | 5"         | 2 5/8"      |             |
|          |            |             |             |
|          |            |             |             |
|          |            |             |             |